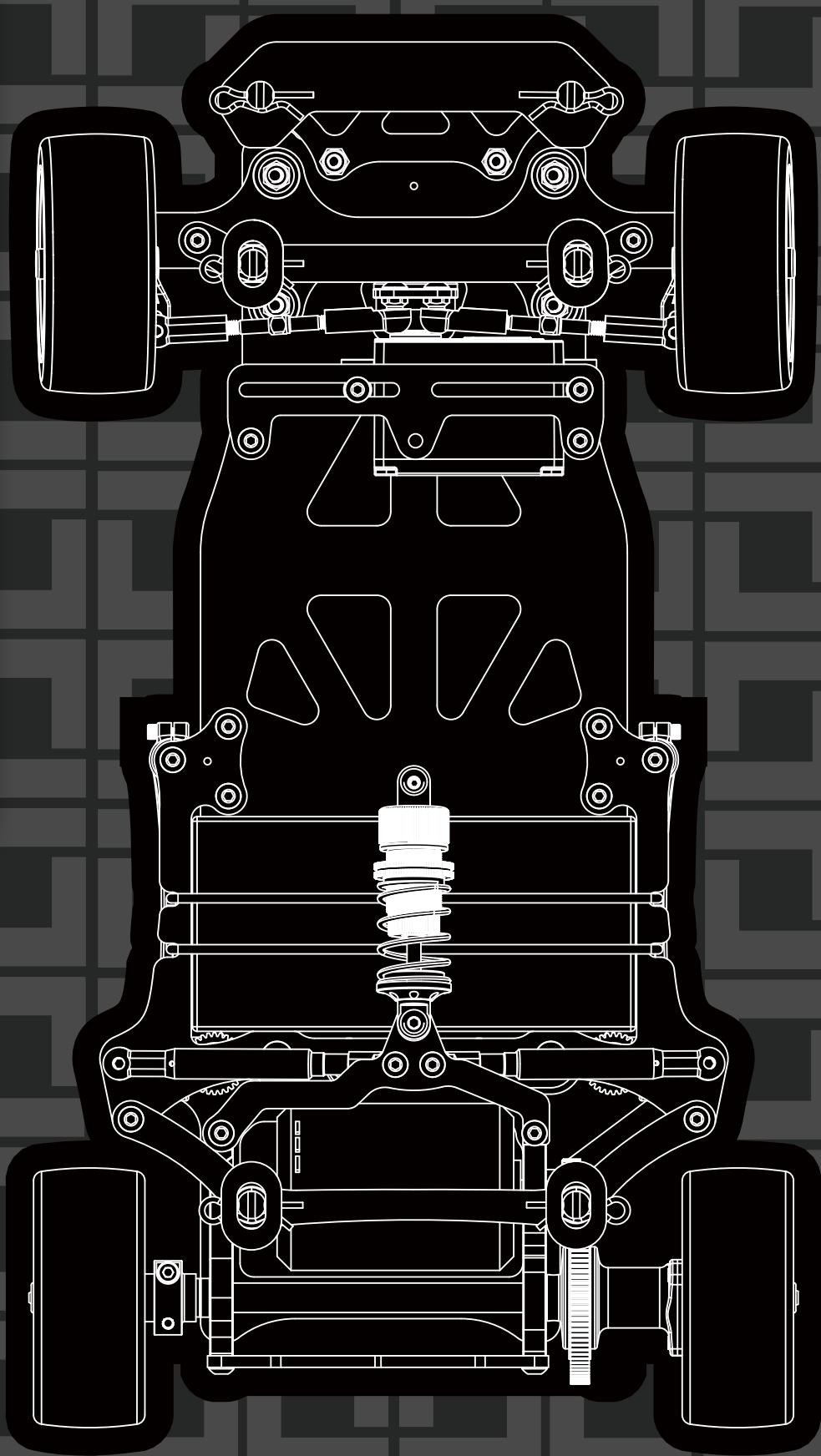


# FX

MGT-210/225



Thank you for purchasing this TEAMSAXO product. This high performance competition kit has been proudly manufactured by TEAMSAXO World Champion R/C car manufacturer.  
Proper assembly of this product will provide fun,safe enjoyment.

## PRECAUTIONS FOR SAFE ENJOYMENT OF YOUR R/C CAR

For children under the age of 13, parental guidance is recommended when running.

### ASSEMBLY PRECAUTIONS

Do not assemble around small children. The parts can be dangerous if accidentally swallowed. Check the contents carefully before assembly. Please contact Customer Support if you happen to notice any defective or missing items.

You will find the assembly process much easier by carefully reading through the manual,and familiarizing yourself with the instructions.

Many different tools are required during assembly. For safety purposes,please use suitable tools. Exercise extra caution when using a sharp tool such as a hobby knife.

Many different materials are used for the parts. Use extra care when handling parts with sharp edges, such as machined metal parts. When cutting plastic parts,watch for any flying parts. Try to assemble any rotating parts of drivetrain parts as smooth as possible.

Bundle wires neatly away from the ground or any moving drivetrain components.Make sure that all wires are properly connected to prevent shorting. Unnecessary modifications may be unsafe and hinder performance.

Always paint in a well ventilated area away from flames.

### FINISHING A RUN

- 1.Turn the speed controller switch OFF.
- 2.Disconnect the battery.
- 3.Turn the transmitter switch OFF,and retract the antenna.

### PRECAUTIONS BEFORE RUNNING

Teamsaxo R/C cars are built for competition use,and some models may exceed speeds of 40km per hour. Practice common sense and run the car in open safe places,or R/C car tracks.

Do not run the car on public roads with high amounts of traffic,or in areas that may cause an inconvenience to people in that area.

R/C cars are controlled using radio frequency.In a worst-case scenario.radio interferences may cause loss of control. If others near you are running R/C cars,confirm that they are not running on the same frequency.

R/C cars do not like water.Avoid running on rainy days,or areas with water puddles.Exposure of the electronics to water may cause loss of control or damage to the electronics

The drivetrain of an R/C car consists of many moving parts like gears,belts,shafts,and tires.Avoid touching these areas when the battery is connected.

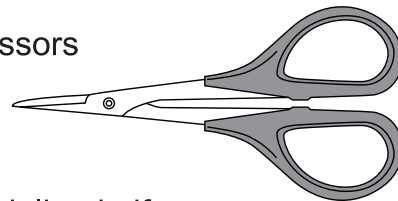
Many parts of an R/C car will become hot after running. Allow the parts to sufficiently cool before conducting any maintenance

### BEGINNING A RUN

- 1.Place the R/C car on a stand so the wheels are off the ground.
- 2.Confirm that the speed controller switch is OFF,and connect the motor and battery
- 3.Extend the transmitter antenna and turn the switch ON. (It is unsafe to use a transmitter with low voltage.Make sure that the transmitter batteries are good before running)
- 4.Turn the speed controller switch ON.

## ASSEMBLING TOOLS REQUIRED (NOT INCLUDED IN KIT)

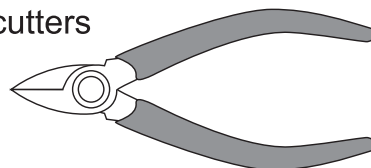
### Scissors



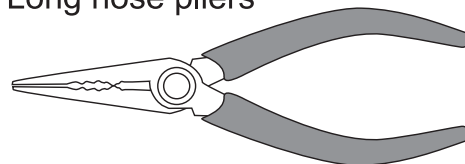
### Modeling knife



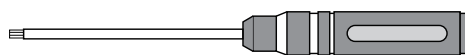
### Side cutters



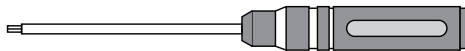
### Long nose pliers



### Hex wrench (1.5mm)



### Hex wrench (2mm)



### Tweezers



## MGT-210 CHASSIS SPECIFICATION

Overall Length :275mm

Overall Width

Front width :163mm

Wheelbase length :210mm

Rear width :165mm

Weigh Chassis only :295g

## MGT-225 CHASSIS SPECIFICATION

Overall Length :290mm

Overall Width

Front width: 163mm

Wheelbase length :225mm

Rear width :165mm

Weigh Chassis only :300g

### Cap



M3×4 SJG304



M3×6 SJG306



M3×8 SJG308



M3×20 SJG320

### Cap screw



M2×6 SG206



M2.5×8 SG2.508

### E-Ring



E-Ring 2.0 OE-E2.0

### Screw



M3×4 SIG304



M3×6 SIG306



M3×8 SIG308



M3×10 SIG310

### Grub screw



M3×3 SK303



M3×8 SK308



M3×10 SK310

### Lock nut



M4 SN-M4-F



M3 SN-M3-F



M3 SN-M3

### Ball bearing



6.35×9.525×3.175  
FR168ZZ



6.35×9.525×3.175  
R168-2RS



5×8×2.5 MR085

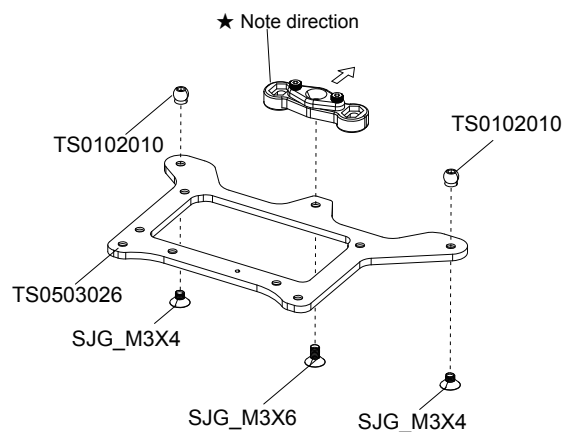
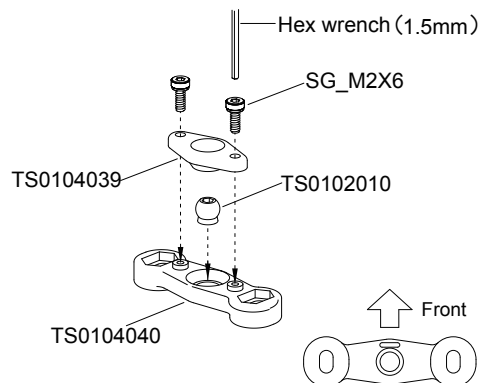




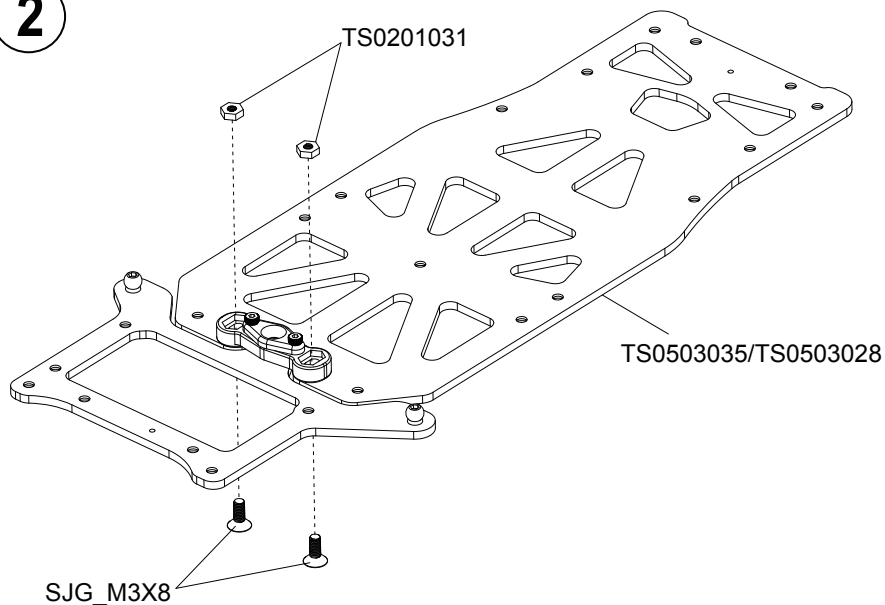
# ① ~ ③ Kit Bag A

## ① Lower deck

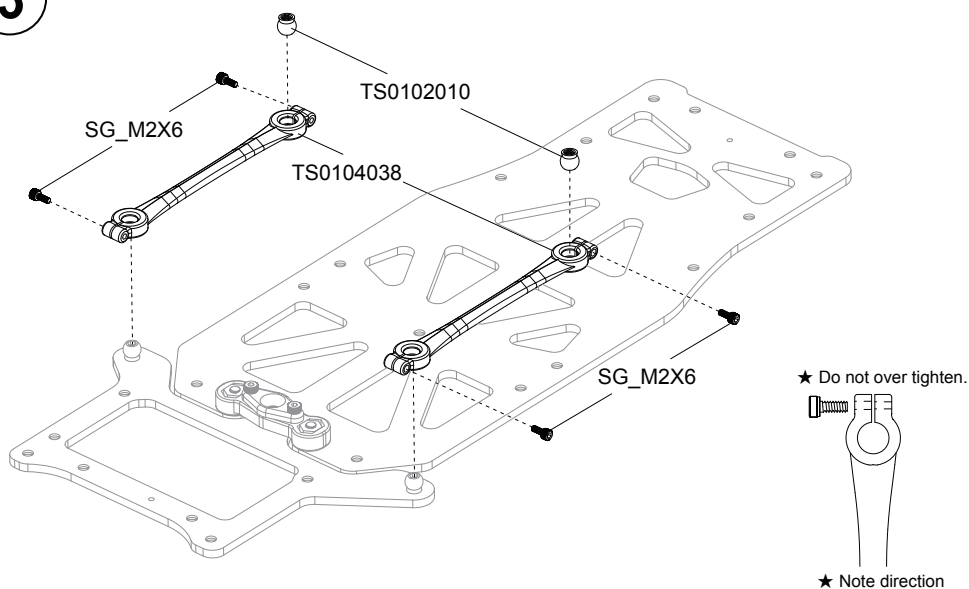
★ Do not over tighten



## ②



## ③



	SJG_M3X6	.....1
	SG_M2X6	.....2
	TS0102010	.....3
	SJG_M3X4	.....2

	TS0201031	.....2
	SJG_M3X8	.....2

	TS0102010	.....2
	SG_M2X6	.....4
	TS0104038	.....2



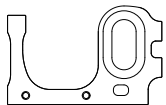
## ④ ~ ④ Kit Bag B



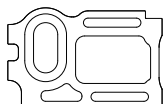
SJG\_M3X8 .....5



SIG\_M3X6 .....4

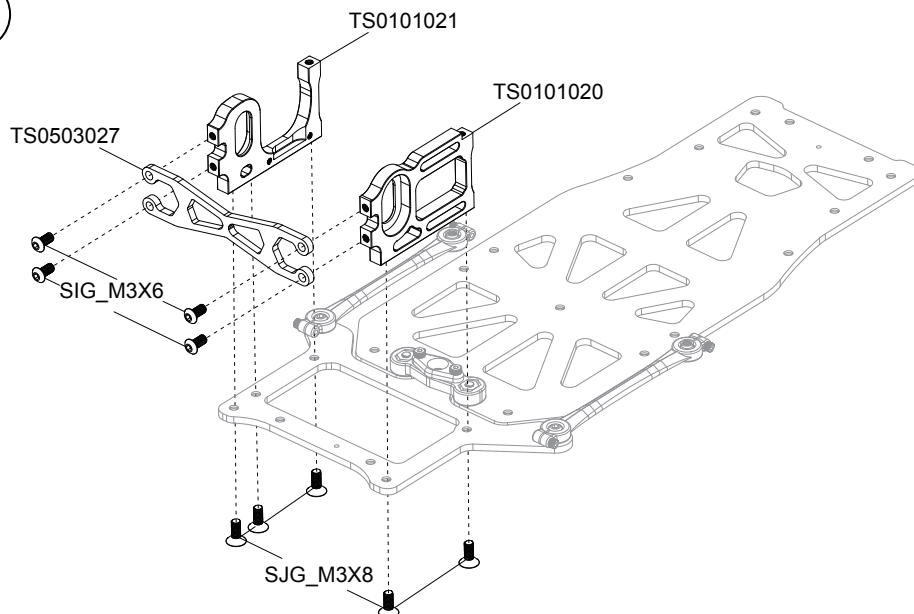


TS0101021 .....1



TS0101020 .....1

④



## ⑤ ~ ⑥ Kit Bag C



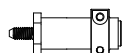
SG\_M2\_5X8 .....2



TS0501032 .....1

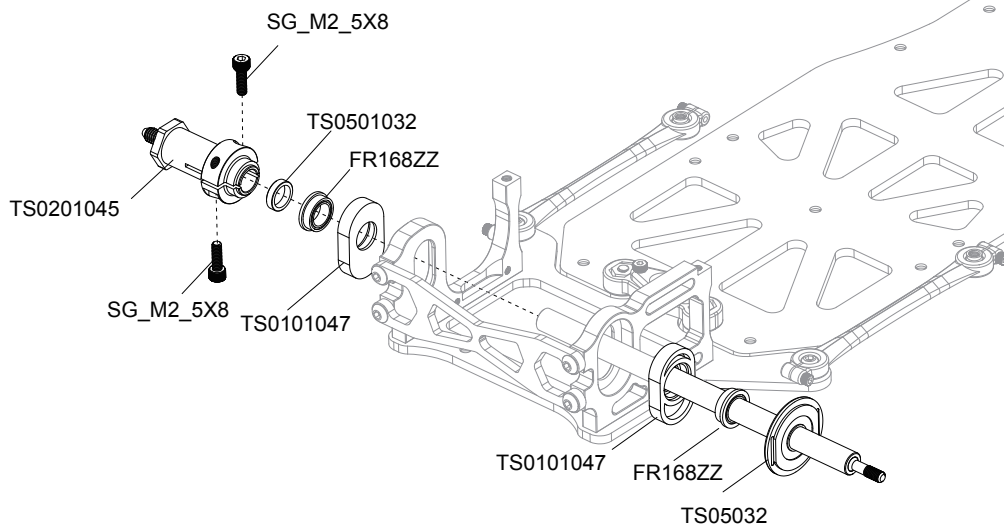


FR168ZZ .....2



TS0201045 .....1

⑤



◎ F3-8M .....1

◎ TS0501021 .....1

○ TS0508007 .....12



FR168ZZ .....2

◎ R168\_2RS .....1



TS0102034 .....2

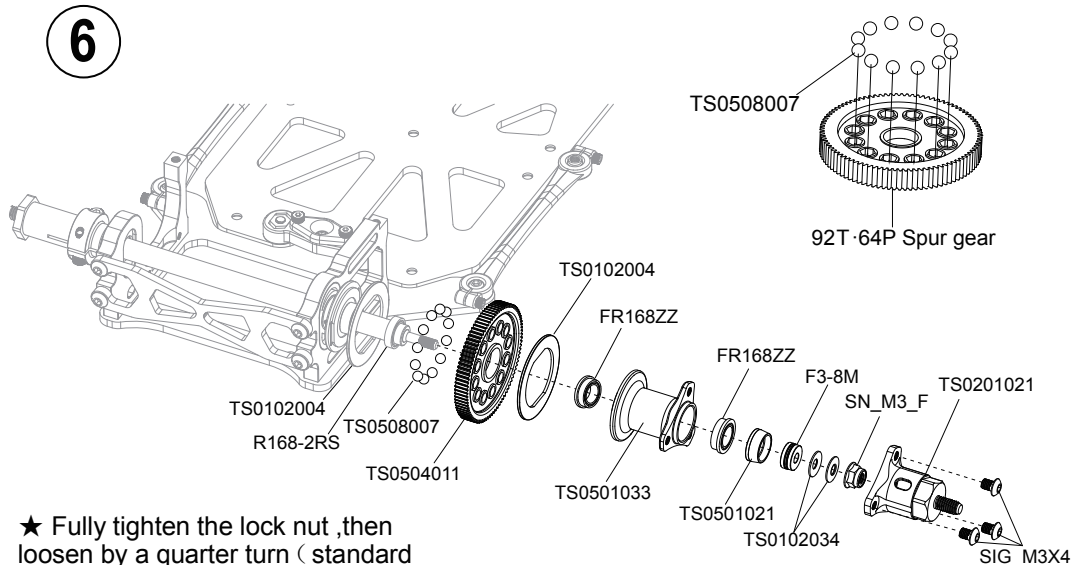
▢ SN\_M3\_F .....1

▣ SIG\_M3X4 .....3

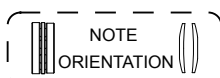


TS0102004 .....2

⑥



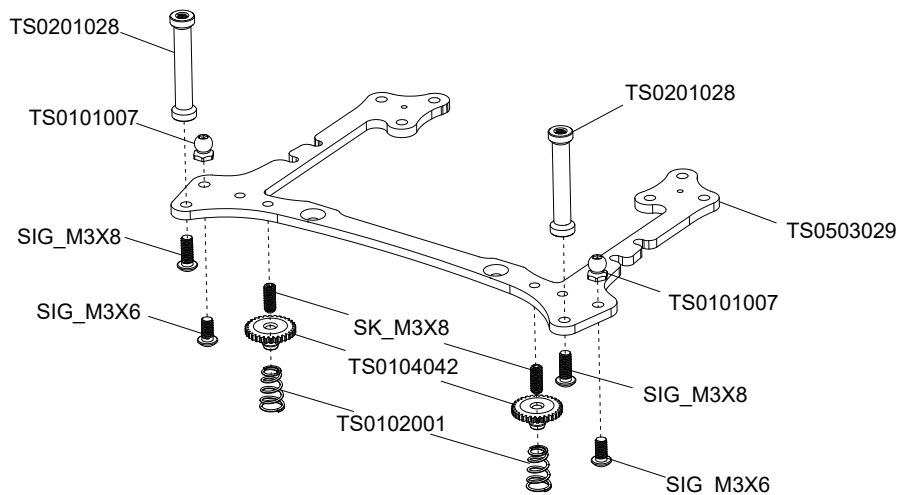
★ Fully tighten the lock nut ,then  
loosen by a quarter turn ( standard  
position)



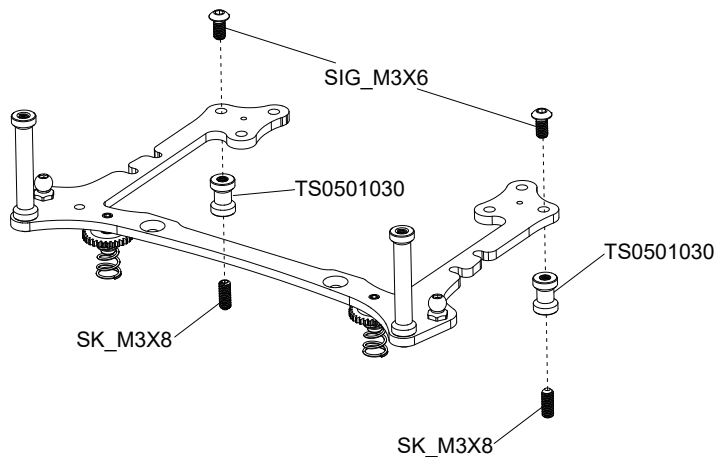


# ⑦ ~ ⑫ Kit Bag D

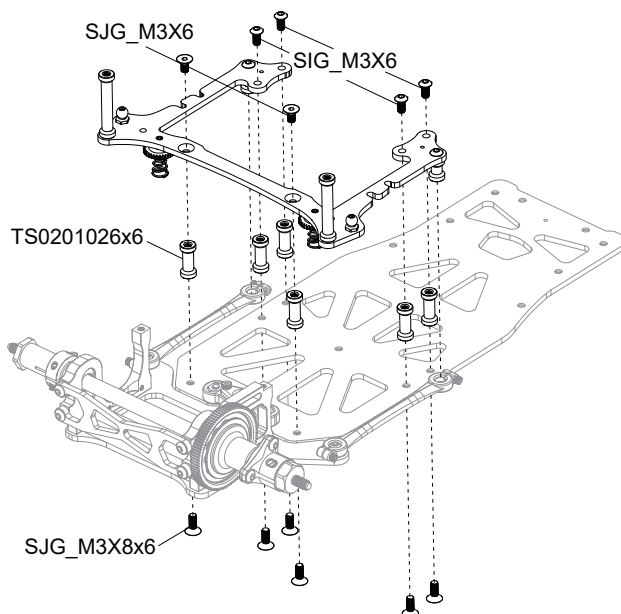
7



8



9



L=40mm

TS0201028 .....2

TS0104042 .....2

TS0102001 .....2

SK\_M3X8 .....2

TS0101007 .....2

SIG\_M3X6 .....2

SIG\_M3X8 .....2

TS0501030 .....2

SK\_M3X8 .....2

SIG\_M3X6 .....2

SIG\_M3X8 .....2

L=9.6mm

TS0501030 .....2

SK\_M3X8 .....2

SIG\_M3X6 .....2

SIG\_M3X6 .....2

L=15mm

TS0201026 .....6

SIG\_M3X6 .....4

SJG\_M3X6 .....2

SJG\_M3X8 .....6

SJG\_M3X8x6 .....6

SJG\_M3X8x6 .....6

SJG\_M3X8x6 .....6

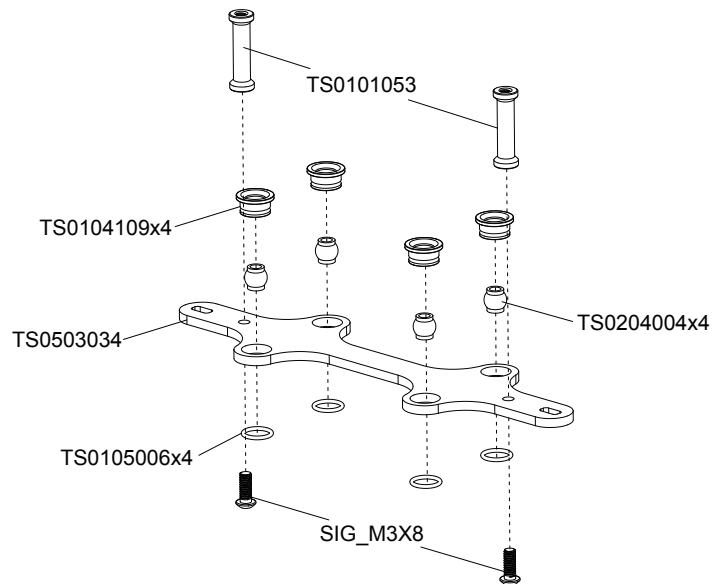
SJG\_M3X8x6 .....6



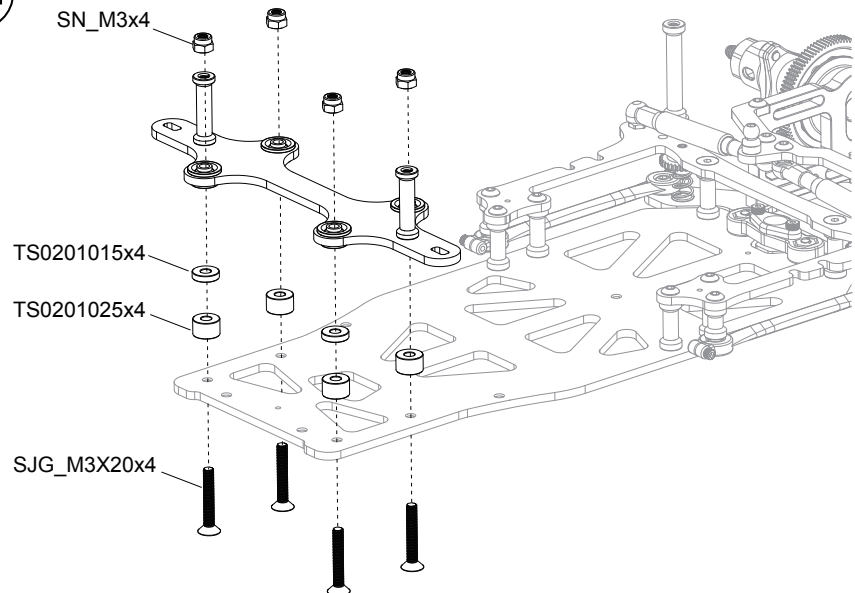


⑬ ~ ⑮  
Kit Bag E

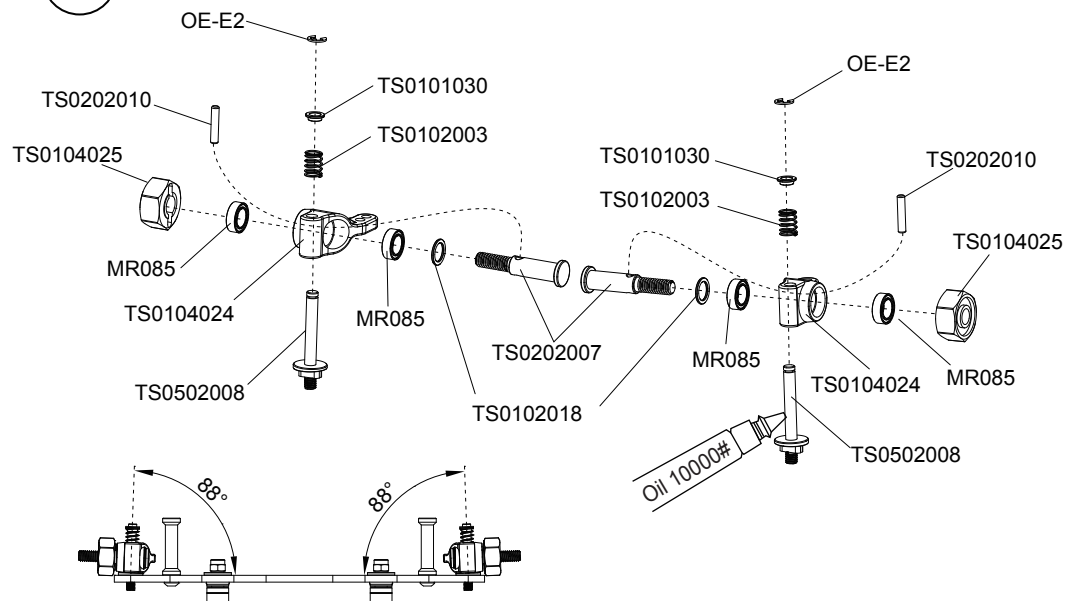
⑬





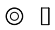
⑭



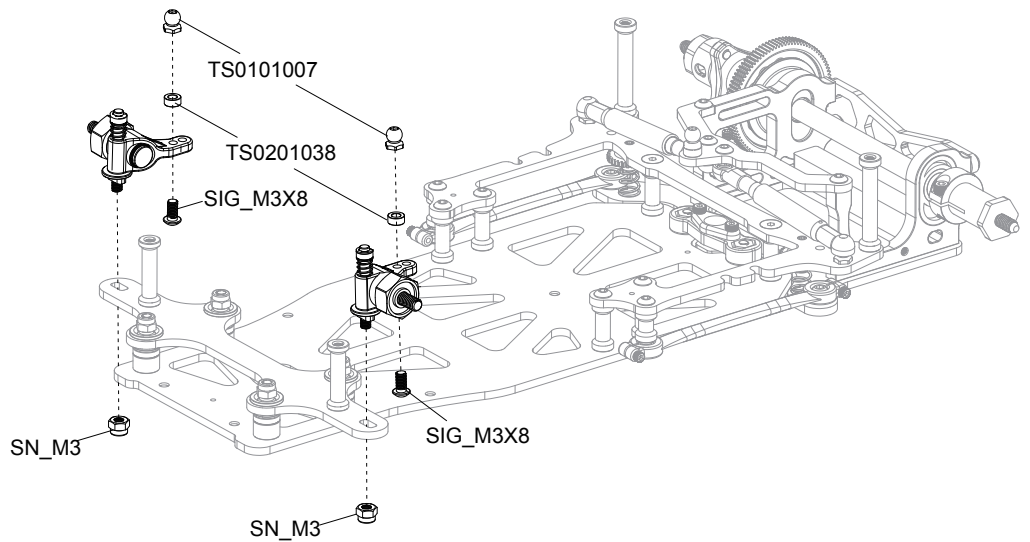
⑮



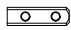








	TS0101007	.....2
	SIG_M3X8	.....2
	SN_M3	.....4
	TS0201038	.....2

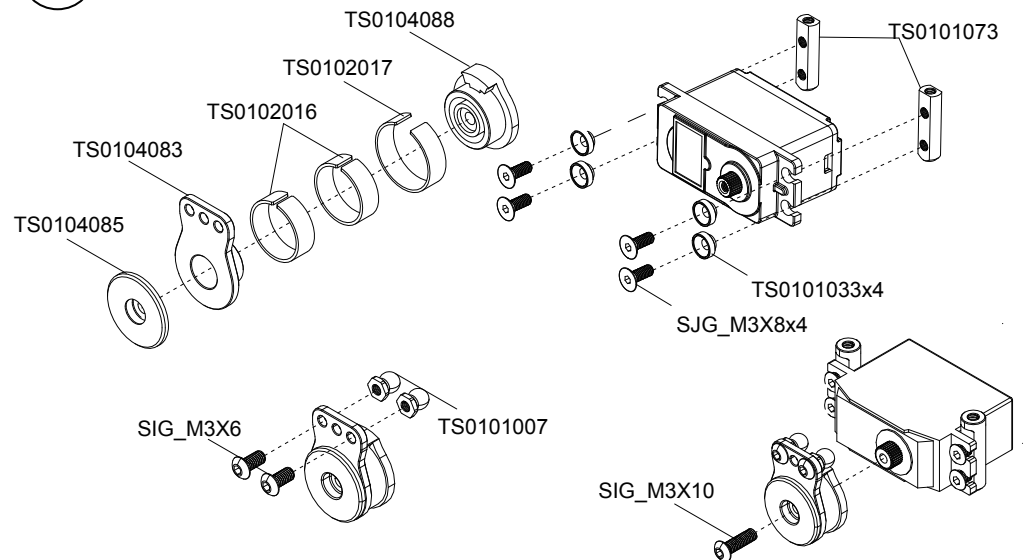
16





17 ~ 25  
Kit Bag F

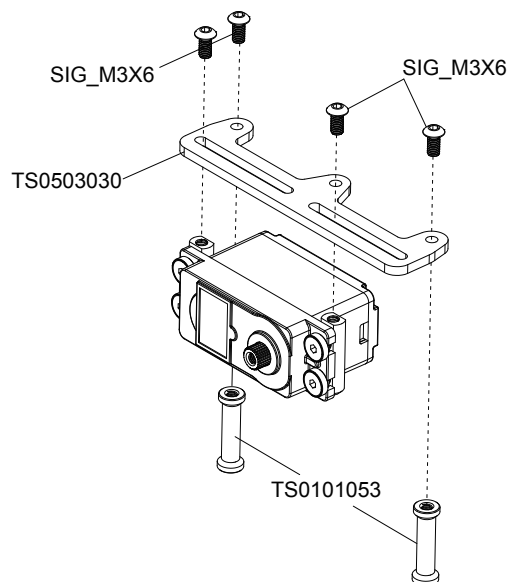
	TS0101073	.....2
	TS0102017	.....1
	TS0102016	.....2
	SIG_M3X10	.....1
	SJG_M3X8	.....4
	SIG_M3X6	.....2
	TS0101033	.....4

17



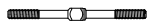
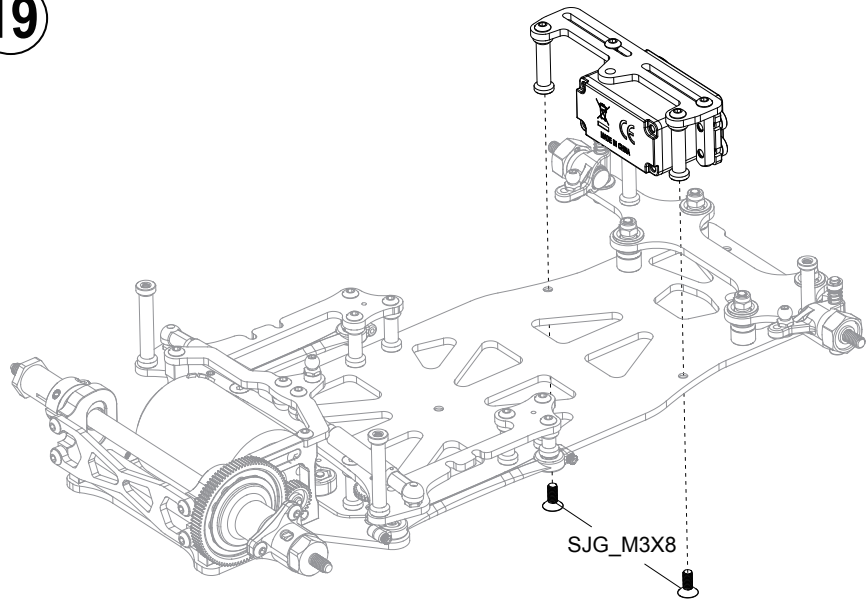
18

	SIG_M3X6	.....4
	TS0101053	.....2



 SJG\_M3X8 .....4

**19**

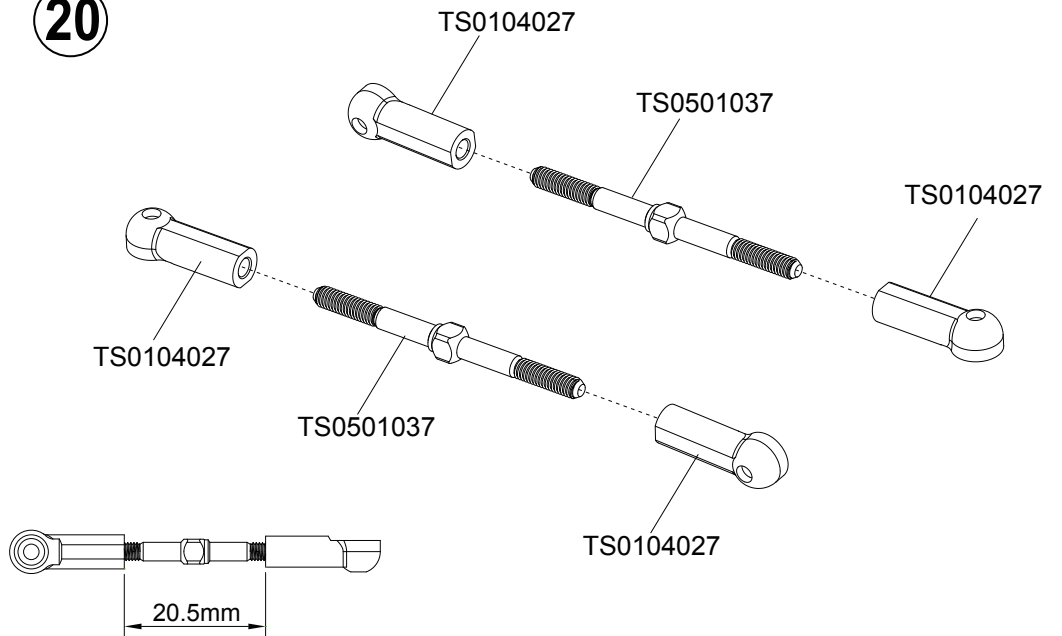


TS0501037 .....2

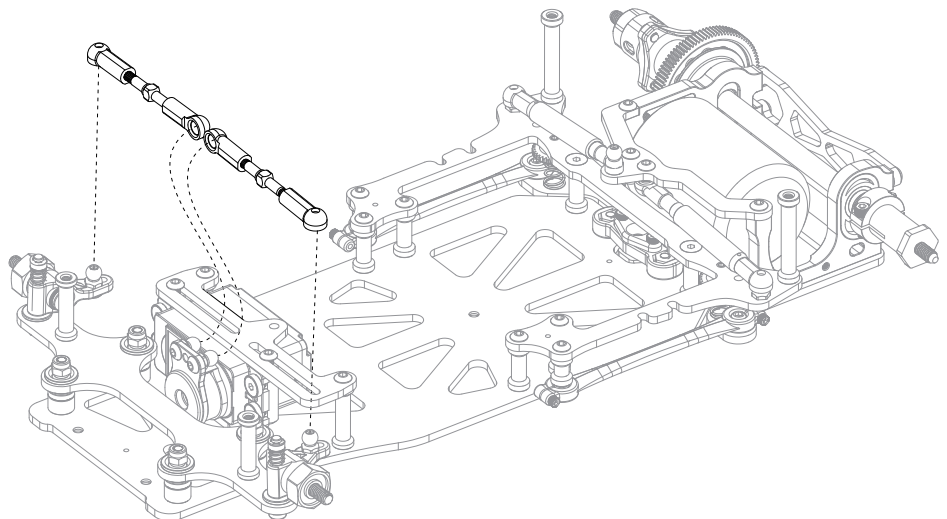


TS0104027 .....4

**20**



**21**







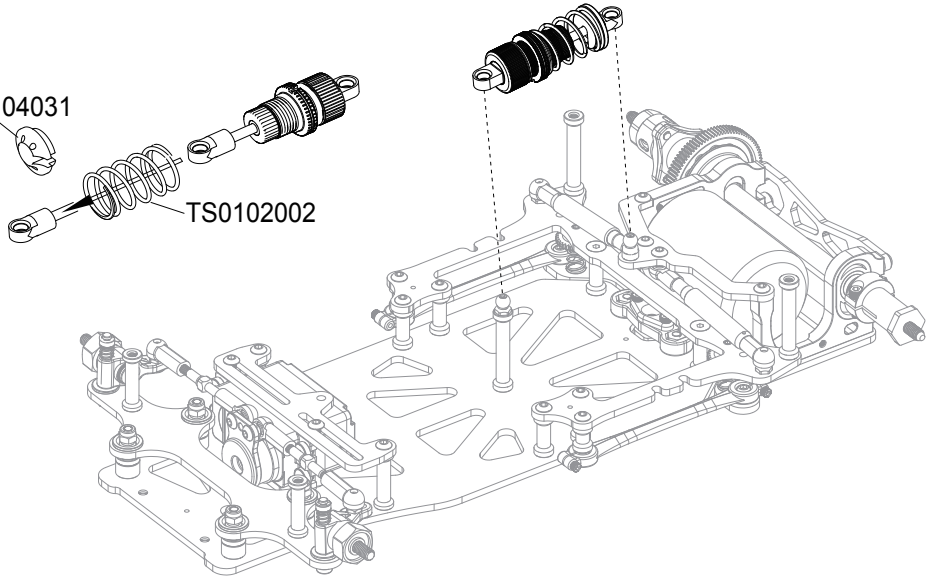
TS0102002 .....1

25

★ Select damper spring according to running surface condition.

TS0104031

TS0102002



26 ~ 32  
Kit Bag G



SN\_M3 .....2



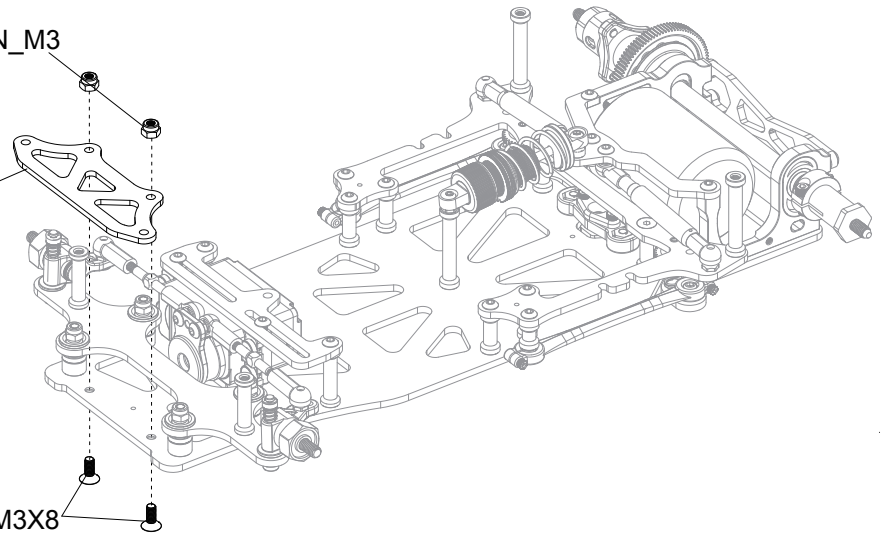
SJG\_M3X8 .....2

26

SN\_M3

TS0503032

SJG\_M3X8



TS-P034\_R6 .....2



SIG\_M3X8 .....2

27

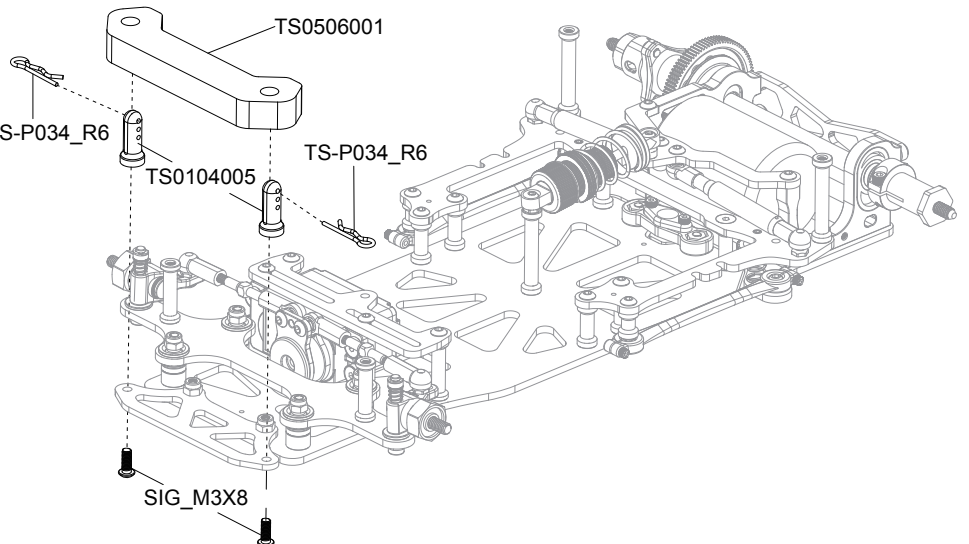
TS-P034\_R6

TS0506001

TS0104005

TS-P034\_R6

SIG\_M3X8





TS-P034\_R6 .....2



TS0104003 .....2

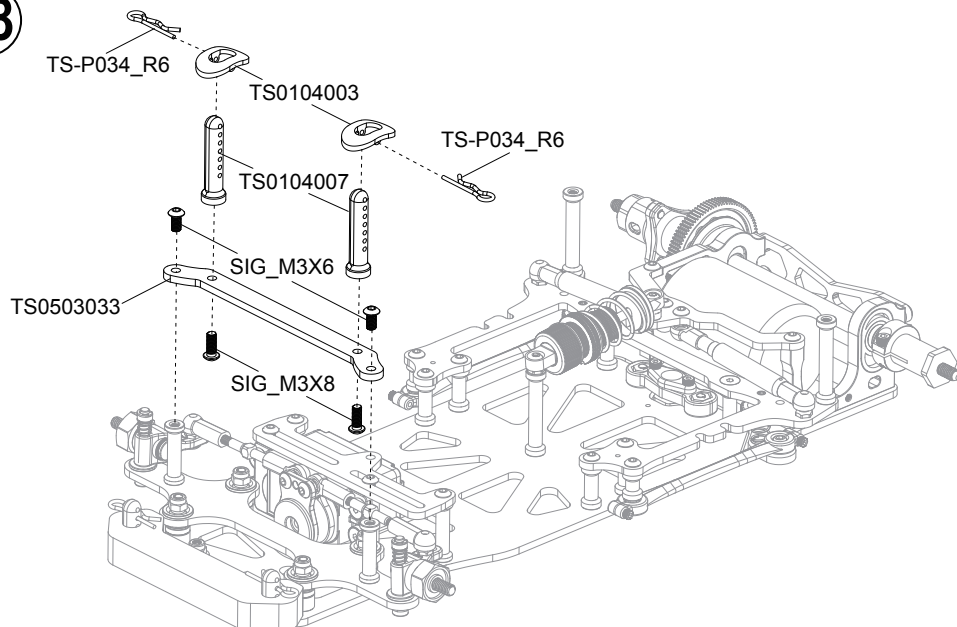


SIG\_M3X6 .....2



SIG\_M3X8 .....2

**28**



TS-P034\_R6 .....2

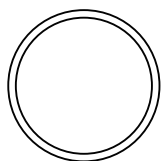
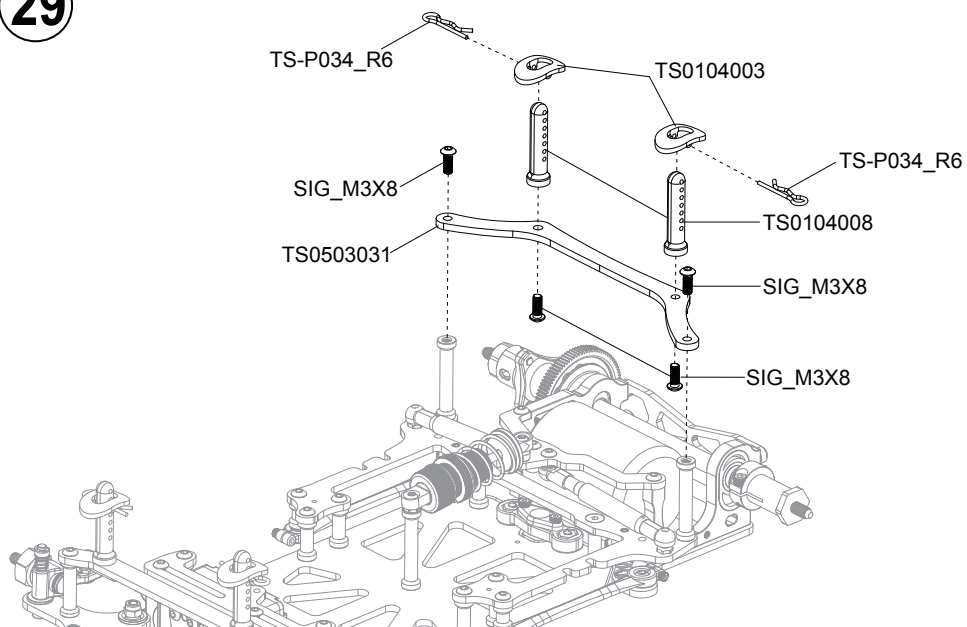


TS0104003 .....2



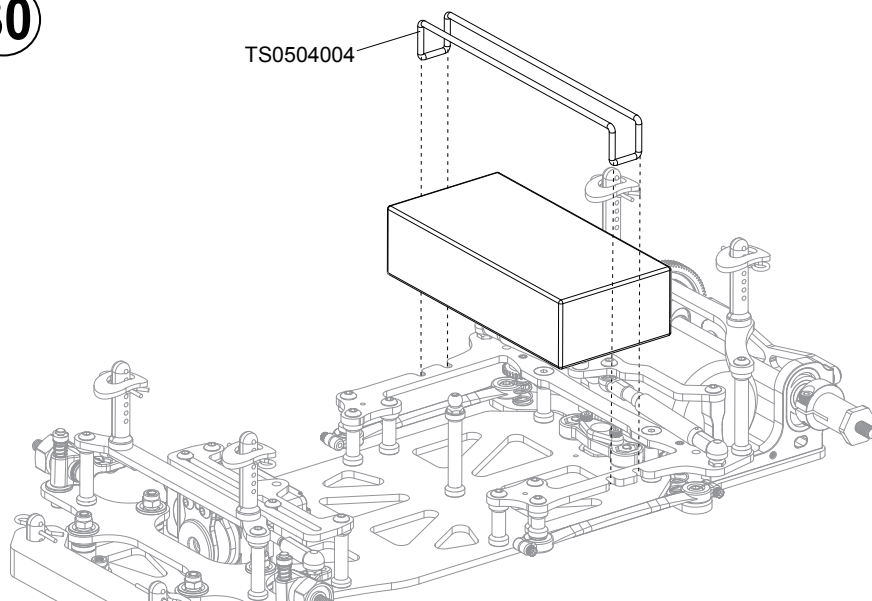
SIG\_M3X8 .....2

**29**




TS0504004 .....1

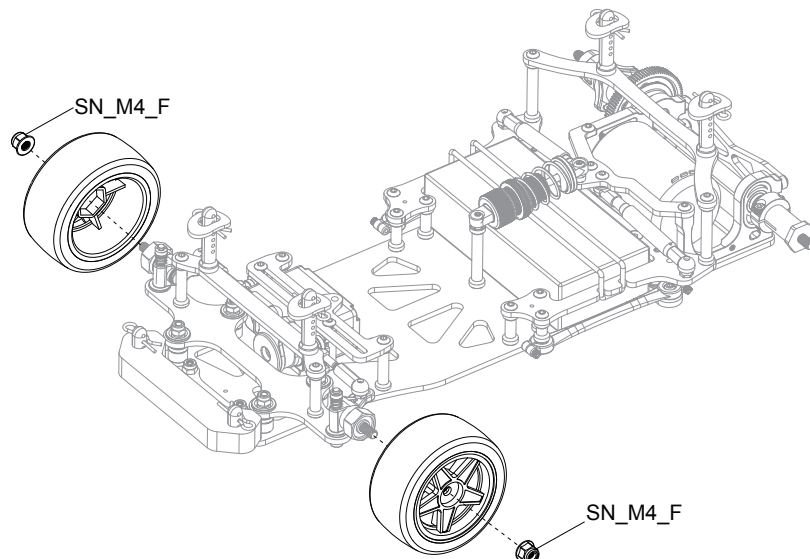
**30**






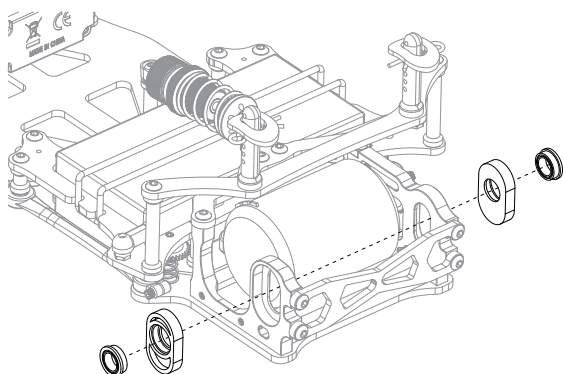
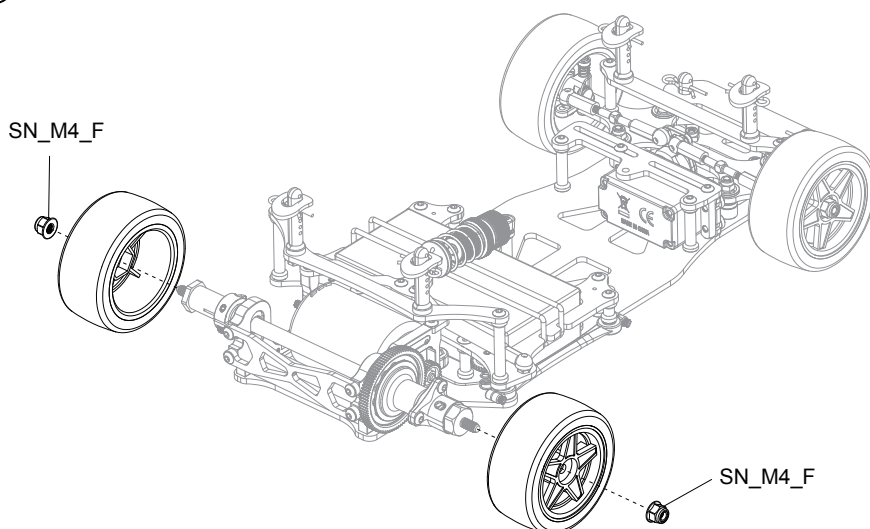
 SN\_M4-F .....2

31



 SN\_M4-F .....2

32



TS0104045 TS0104046 TS0104047 TS0104048 TS0104049



TS0104050 TS0104051 TS0104052 TS0104053 TS0104054



**VAPON INDUSTRIAL CO., LTD**  
***[Http://www.saxoracing.com](http://www.saxoracing.com)***  
***[E-mail:saxo@saxoracing.com](mailto:saxo@saxoracing.com)***



**MGT 210/225**

